



ELECTROTECHNICS

project / realization / service





ESTABLISHMENT





AN-ELEC company was established in 1998.

Through all those years the company has provided various electrical installations and conversion services, it also has built power supply-control distribution boards for different ships, platforms, docks and many more.

For past 20 years AN-ELEC is active in this fields in Poland and abroad. We participate from design right up to implementation. It is possible to consult us right from the start, so we can help to set up your projects.

During the years company grown to 250+ employees working across whole Europe.





Partnership with AN-ELEC result is real win-win situation,
We always work:



Transparently



Efficiently



Complying with all the rules



On time & within budget



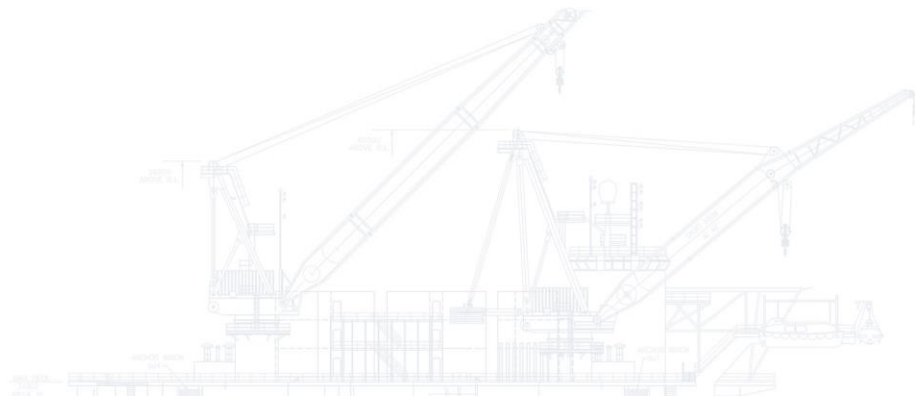


CERTIFICATES



„Safety first“

It's a rule that AN-ELEC emphasize to all of its employees and customers, we work safely or we do not work at all.





In order to keep safety on highest level we possess certificate.

VCA **

ISO 9001:2015

VRO

Reliable Company





WHY US?



AN-ELEC integrates products and systems together in an integrated working system.

We design electrical systems according client & class requirements.

Our knowledge of available technology is extensive.

Balance between innovation and proven technology.





**We are integrators
and take responsibility
for the interfacing
between electrical,
electronic and automation
components like:**

- Electrical Drives & Motors
- Navigation Systems
- GMDSS
- VSAT
- Telephone, DECT and VOIP
- General Alarms
- Fire Detection
- Lighting & Dimming Systems
- Steel work installations



We have a skilled and experienced engineering department for electrical and mechanical design specific for:

- Conceptual design
- Functional design
- System design & specification
- Trouble shooting
- Inspection
- Project supervision



As turn-key provider we have our own fully equipped 525 m² workshop where we produce high quality equipment

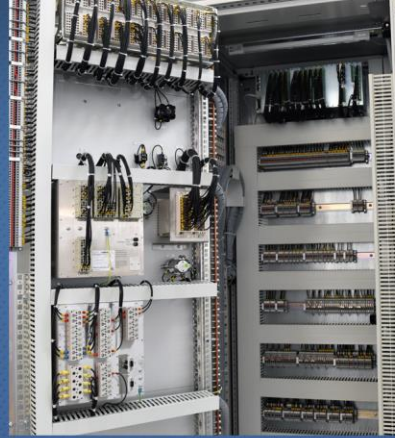
Switchboards

Distribution Panels

Power Plant Automation

Transformers & Converters

Generators





OUR PROJECTS





SUBSEA
(various vessels)

Seven Atlantic
Seven Pacific
Seven Waves
Seven Rio
Seven Sun
Seven Cruzeiro
Seven Vega

kees torn © CC BY-SA 2.0



kees torn © CC BY-SA 2.0



Alan Jamieson © CC BY 2.0



kees torn © CC BY-SA 2.0



kees torn © CC BY-SA 2.0



kees torn © CC BY-SA 2.0





SUBSEA

(various vessels)

Seven Atlantic
Seven Pacific
Seven Waves
Seven Rio
Seven Sun
Seven Cruzeiro
Seven Vega

Scope of work

- Complete electrical design
- Main and secondary steel works
- Complete cable installation
- Delivery and connection of main switchboard LV
- Alarm and monitoring
- Fire detection system



Innovation (NB 142/1)





**Innovation
(NB 142/1)**

Scope of work

- Complete electrical and mechanical design
- Main and secondary steel works
- Complete electrical installation package including cable pulling, connections and start up
- Delivery of main switchboard LV





Pioneering Spirit





Pioneering Spirit

Scope of work

- Complete construction of 16 cabins placed on beams
- Main and secondary steel works
- Delivery of electrical switchgear
- Lightning system
- HVAC system





Marco Polo (NB 56)





Marco Polo (NB 56)

Scope of work

- Complete electrical design
- Delivery of main switchboard, switchgear, control panels
- Main and secondary steel work
- Complete electrical installation with commissioning and start up



Pacific Jewel





Pacific Jewel

Scope of work

- Complete electrical design
- Delivery of main switchboard, switchgear, control panels
- Main and secondary steel work
- Complete electrical installation with commissioning and start up



Pacific Pearl





Pacific Pearl

Scope of work

- Complete electrical design
- Delivery of main switchboard, switchgear, control panels
- Main and secondary steel work
- Complete electrical installation with commissioning and start up



ZOURITE (NB 105)





**ZOURITE
(NB 105)**

Scope of work

- Execution of a comprehensive electrical installation with delivery of materials
- Manufacture of electrical switchgears
- Launch and passing for shipowner and the Classification Society
- Execution of complete electrical documentation for residential modules



ELEKTRA (P310)





**ELEKTRA
(P310)**

Scope of work

- Complete electrical installation 80.000 meters of cable
- Manufacture of local cable routes and fittings
- Assembly of electrical equipment
- Connection of all cable segments
- Starting and passing parts of electrical systems
- Delivery of installation materials



Mobile Pearl (Bontrup Pearl)





**Mobile Pearl
(Bontrup Pearl)**

Scope of work

- Installation of a new power generator (2000 kVA)
- Design and construction of unloading system power supply
- Design and construction of a control and power system for the new hydraulic
- Design and construction of the most important system power and control of conveyor belts and cargo chutes (Gate's)
- Design and installation of a CCTV system
- PLC system built on controller with three "islands" - the so-called distributed system
- Control panels transmission for shipowner



REFERENCES





SMT Shipping



TO WHOM IT MAY CONCERN

LETTER OF RECOMMENDATION

Dear Sirs/Madame,

Please be informed that SMT Shipping Poland Sp. z o.o. head office in Sopot Parkowa 46, hereby declares that company An-elec Sp. z o.o. ul. Hutnicza 40, 81-061 Gdynia has successfully build, install, connect and start main switchboard and distribution boxes at the floating barge.

We recommend them as highly correct and reliable company.
If you require any further information from SMT Sp. z o.o. in regards to above mention matter please do not hesitate to contact us.

With Kind Regards,
SMT SP. Z.O.O.


Leszek Węgrzyn
Managing Director

SMT SHIPPING POLAND K.F. Z O.O.
ul. Chłopska 46, 81-723 Sopot, Poland
+48 58 509 72 72 +48 58 509 72 99
www.smtshipping.com





CRIST SA

TO WHOM IT MAY CONCERN

LETTER OF RECOMMENDATION

Dear Sirs/Madam,

Please be informed that CRIST SA located in Gdynia Czechoslowacka 3, Poland, hereby declares that company AN-ELEC Sp.z o.o. ul. Hutnicza 40, 81-061 Gdynia has successfully built, install, connect and start main switchboard and distribution boxes at the floating Dock Marco Polo.

We recommend AN-ELEC as highly correct and reliable company.

If you require any further information from CRIST SA in regards to above mention matter please do not hesitate to contact us.

with kind regards,

Lukasz Topa
Project Manager

Project Manager
Lukasz Topa

2018-11-27

CRIST S.A.
81-210 Gdynia ul. Czechoslowacka 3
NIP: 527-767-13-00, KRS: 0000000000
NIP: 543-042-043 REGON: 140900007
KRS: 000000000000000000





Kadlec & Brödlin GmbH

**SCHIFFSELEKTRIK
ELEKTRONIK
NAVIGATION
KOMMUNIKATION**

**ELECTRIC
MARINE BUILDING
AND
ENGINEERING**

Kadlec & Brödlin GmbH
Kraussstraße 21 | 47119 Duisburg

Telefon +49 (0) 2 03 / 47 99 5 - 0
Telefax +49 (0) 2 03 / 47 99 5 - 10
E-Mail info@kadlec-broedlin.de
Internet www.kadlec-broedlin.de

Kadlec & Brödlin GmbH - Postfach 11 015 M - 47105 Duisburg
Kadlec & Brödlin GmbH - Kraussstraße 21 - 47119 Duisburg

AN-ELEC Ltd
Hutnicza 40
81-061 Gdynia
Poland

Empfehlungsschreiben für die Firma AN-ELEC Ltd aus Gdynia / Poland

Sehr geehrte Damen und Herren,

bereits seit Anfang 2018 arbeitet unsere Firma regelmäßig mit der Firma AN-ELEC Ltd aus Gdynia zusammen. AN-ELEC unterstützt uns auf der GS Yard in den Niederlanden mit qualifizierten Fachpersonal Tankschiffe für die Binnenschifffahrt mit elektrotechnischen Komponenten auszurüsten.

Das Personal von AN-ELEC übernimmt für uns die Installation der Kabelbahnen und das Verlegen aller notwendigen Kabel sowie deren Anschluss an die Verbraucher.

Wir haben AN-ELEC im Laufe der Zeit als äußerst zuverlässigen und sehr engagierten Geschäftspartner erlebt. Mit ihrer Arbeit sind wir so zufrieden, dass sie damit andere, bisherige Partner ersetzt hat.

Mit freundlichen Grüßen
Kadlec & Brödlin GmbH

Christian Kadlec
Geschäftsführer

Das Wort bleibt bis zur restlosen Bezahlung unser Eigentum. Geschäftsfeldung unentgeltlich. Zweigstelle Verdingung 15. Telefon +49 (0) 2 03 / 47 99 5 - 70
Wir liefern zu unseren unentgeltlichen allgemeinen Geschäftsbedingungen, die auch im Internet unter www.kadlec-broedlin.de heruntergeladen werden können.

| | | | | | |
|------------------------|-------------------------|--------------------|---------------|------------------|--------------------------|
| Geschäftsführer | Bankverbindungen | BLZ | Konten | SWIFT-BIC | USt-IdNr. |
| Christian Kadlec | Commerzbank Duisburg | IBAN DE37 33060338 | 0414517000 | COBKDE33HAN | DE 321 519 951 |
| Angeschrieben | Bank für Sozialpolitik | IBAN DE74 25050771 | 0311253000 | BSWIDE33HAN | Provision: Duisburg West |
| Duisburg, Nr. 489.861 | Postbank Frankfurt | IBAN DE24 25050043 | 0130514538 | PKFIDE33HAN | St.-Nr. 134/7753/0174 |





Croonwolver&dros



Croonwolver&dros B.V.
Branch Office Dordrecht
Binnenboord 125
3316 EC Dordrecht
P.O. Box 105
3300 AC Dordrecht
The Netherlands
Telephone +31 60 833 88 33
www.croonwolver&dros.nl

Chrt 4446163
SBB reg. no. 14-12-02060

Marel Holding B.V.
To whom it concerns
Handelsstraat 3
5831 AV BOUMER
The Netherlands


Subject
LETTER OF RECOMMENDATION

Dear Sir / Madam,

Please be informed that Croonwolver&dros B.V., Rotterdam, hereby declares that the company An-Elec Sp.z.o.o. ul. Hutnicza 40, 81-061, Gdynia, Poland is one of our most valued colleague and partner companies.

An-Elec has cooperated together with Croonwolver&dros B.V. on many projects in the Netherlands both on- and offshore.

As part of these projects An-Elec has been involved in production of switchboards / distribution panels as well as providing service teams.

We recommend them as a highly correct and reliable company.

If you require any further information please do not hesitate to contact me on tel. nr. +31 651153869

Trusting to have informed you sufficient.

Yours sincerely
Croonwolver&dros B.V.

ing. A.C. (Aco) van de Ven MBA
Director Marine & Offshore

Date
October 7, 2019
Number
1910-00713
Correspondence by
E. (Ellen) Nootenboom
Telephone extensie
+31 88 923 33 31
E-mail
ellen.nootenboom
@croonwolver&dros.nl
Page
1 of 1



croonwolver&dros

Op al onze aanbestedingen en overeenkomsten zijn mede van toepassing de Algemene Leveringsovereenkomsten Insulindeke Breda/Breda 1992 (A.L.B. 1992), alsmede onze Aanbestedings Voorwaarden zoals goedgekeurd bij de Kamer van Koophandel te Rotterdam op 14 maart 2008. De inhoudsopgaven van de andere overeenkomsten zijn verkrijgbaar op internet. De A.L.B. 1992 en onze Aanbestedings Voorwaarden zijn beschikbaar op: www.croonwolver&dros.nl. Een exemplaar van beide overeenkomsten worden bij u desgevraagd toegezonden.



Protacon



REFERENCE LETTER

19.11.2019

Protacon is specialised in the design and project management of electrification, automation and electric drives for the marine industry. Our special areas include on-board power generation, marine automation and diesel-electric propulsion drives.

Protacon offers reliable service worldwide for all stages of ship construction projects, either as consulting service or as turnkey projects.

The company An-Elec Sp. z o.o. is oriented on the marine electrical and automation installations.

An-Elec Sp. z o.o. delivered us fully equipped and tested electrical room container with transformers, switchboards etc. for wave energy converter.

The specific orientation of our company requires also specific demands on our suppliers.

We believe that thanks to the cooperation with the company An-Elec Sp. z o.o. we will find new activities in the future.

On the basis of our positive experience we recommend the services of the company An-Elec Sp. z o.o.

Sincerely,

Arto Vartiio
Chief Operating Officer
Protacon Technologies Oy





ELECTROTECHNICS

project / realization / service



Hutnicza 40
81-061 Gdynia, Poland

Phone: +48 58 668 44 00
Email: info@an-elec.pl
Web: www.an-elec.pl